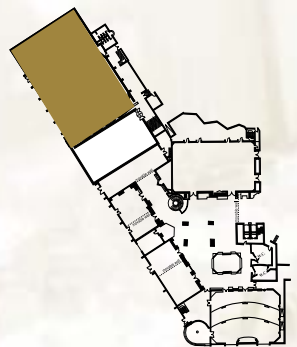


Jupiter ballroom

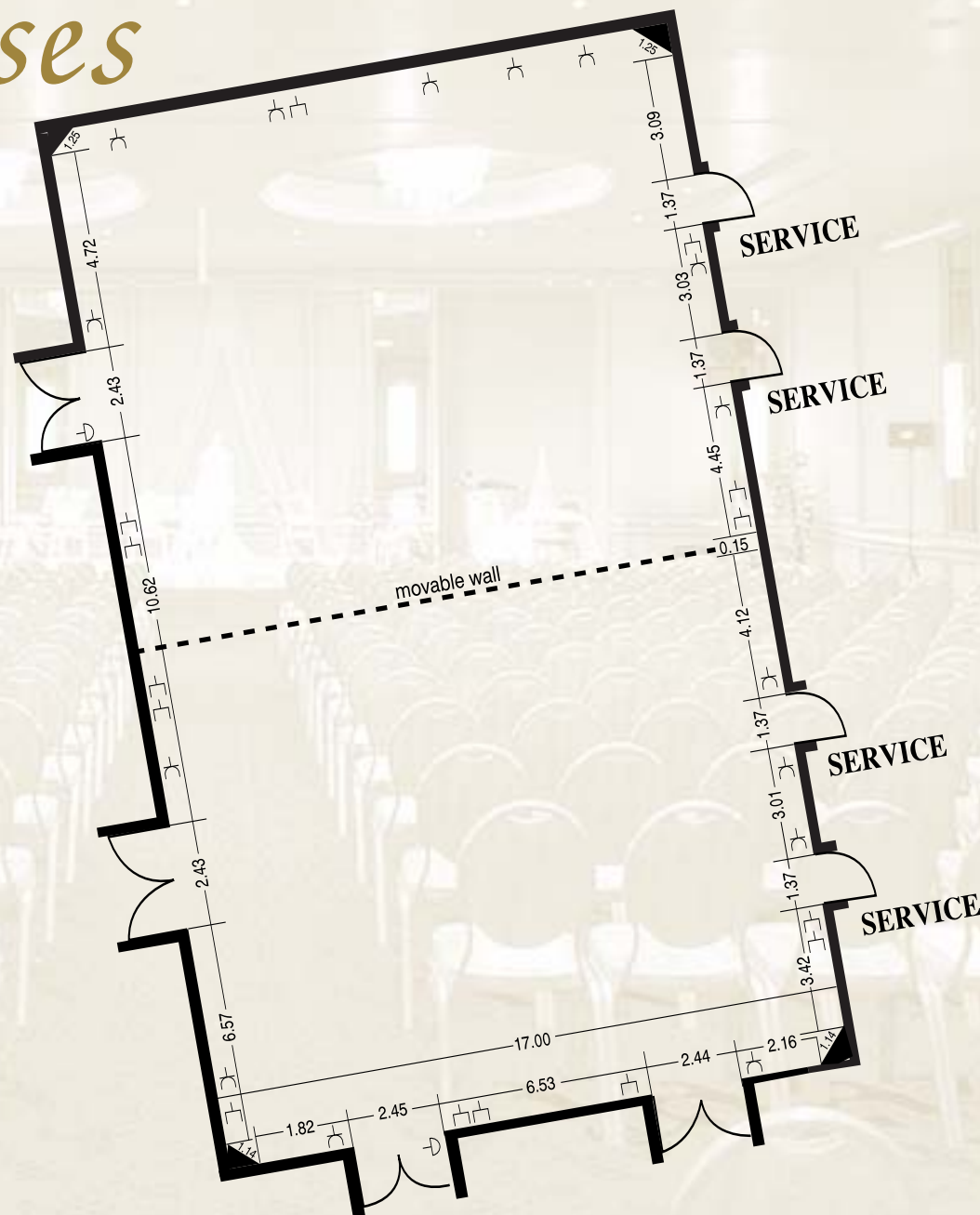
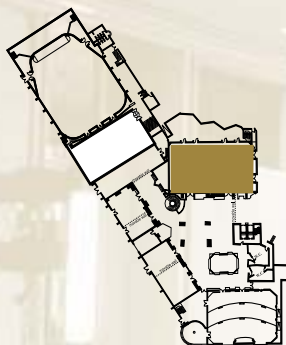


Legend

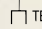
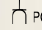

- ☐ TELEPHONE SOCKET
- ⏻ POWER PLUG
- ⚡ 3 PHASE POWER PLUG
- ↔ DIMMER LIGHT SWITCH

Maximum Capacity	Technical Specifications	
STYLE	CEILING HEIGHT: 8.00m	AREA: approx 850m ²
THEATRE: 1300	ACCESS DOORS: 3+1	LEVEL: Ground
CLASSROOM: 650	DISABLED ACCESS: Yes	AIR CONDITION: Yes
BANQUET: 800	FLOOR: Wall to wall carpet	VEHICULAR ACCESS: Yes
RECEPTION: 2000	STAGE: Fullsize fixed	PARTITION WALLS: No
	PROJECTION SCREEN: Cinemascope size with capability for front & rear projection	
	SIMULTANEOUS INTERPRETATION SYSTEM: Wireless Infrared system for 8+1 languages. Translation booths according to E.U. standards	

Salon des Roses

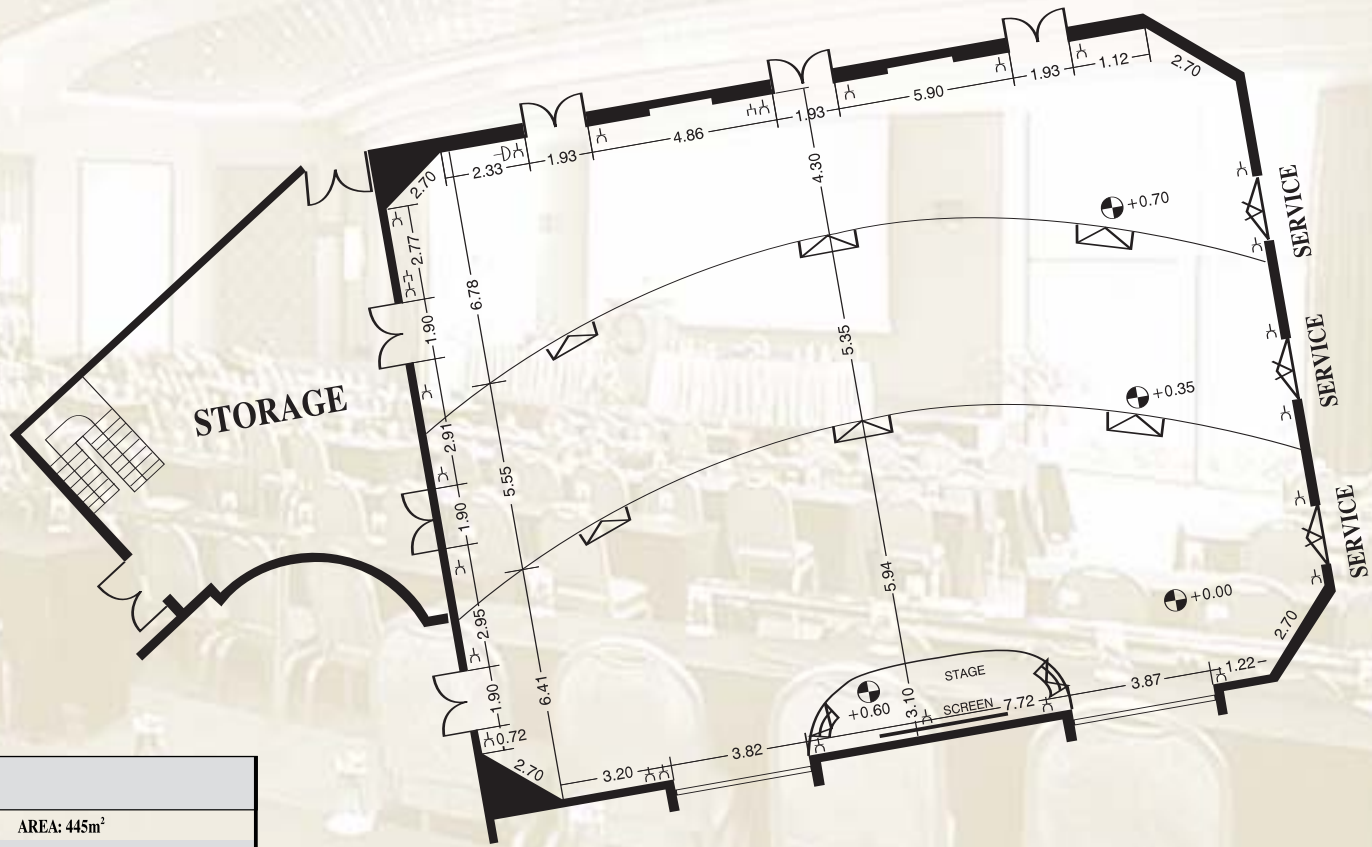
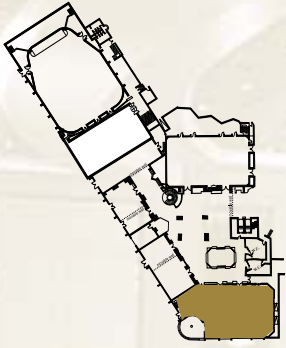


Legend

-  TELEPHONE SOCKET
-  POWER PLUG
-  3 PHASE POWER PLUG

Maximum Capacity	Technical Specifications	
STYLE	DIMENSIONS: 28.29 x 17.00	AREA: 480m ²
THEATRE: 650	CEILING HEIGHT: 4.70m	LEVEL: Ground
CLASSROOM: 450	ACCESS DOORS: 4	AIR CONDITION: Yes
BANQUET: 480	DISABLED ACCESS: Yes	VEHICULAR ACCESS: Yes
RECEPTION: 1000	FLOOR: Wall to wall carpet	PARTITION WALLS: Yes
	PROJECTION SCREEN: Large size built in, automatically removed	
	SIMULTANEOUS INTERPRETATION SYSTEM: Wireless Infrared system for 6+1 languages. Translation booths according to E.U. standards	

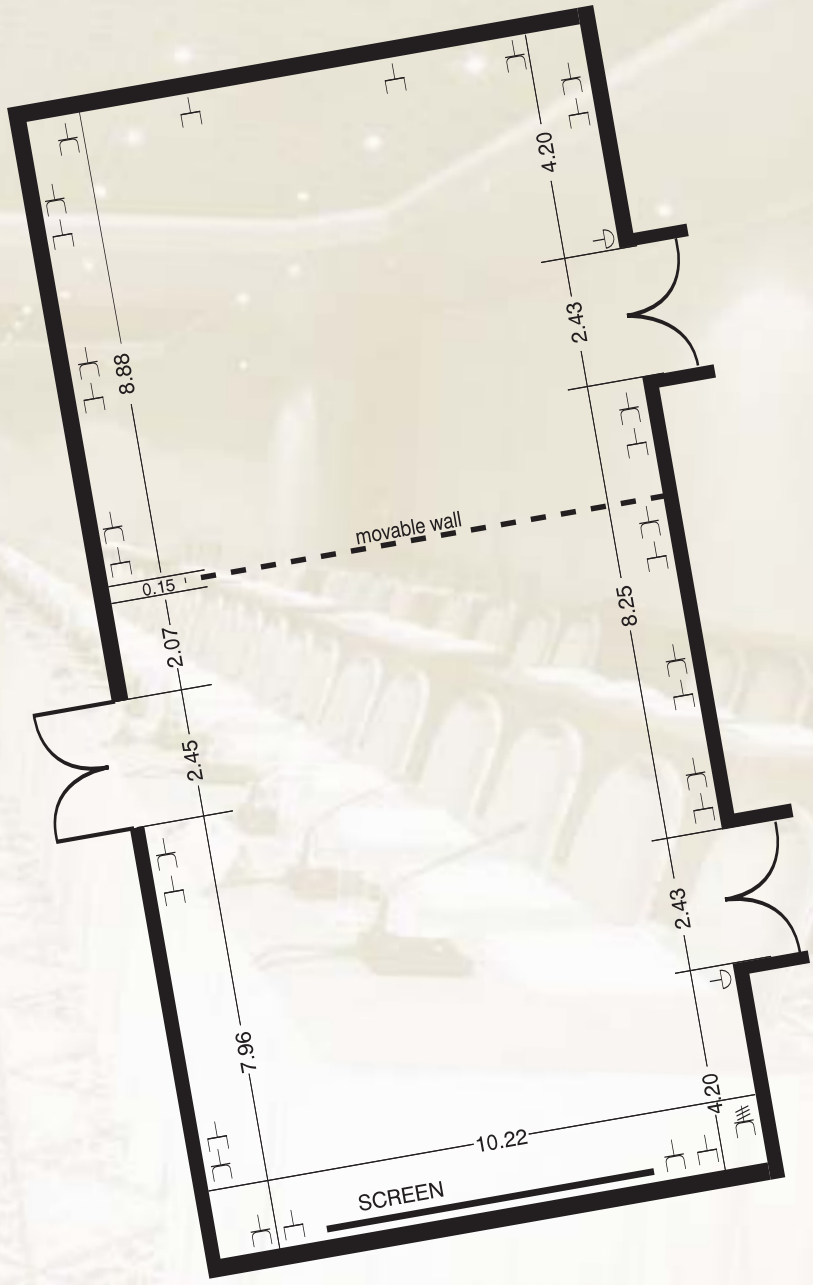
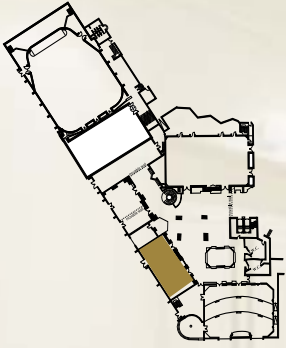
Delphi amphitheatre



Maximum Capacity	Technical Specifications	
STYLE	DIMENSIONS: 23.74 x 18.74	AREA: 445m ²
THEATRE: 600	CEILING HEIGHT: 5.50m - 3.85m	LEVEL: Ground
CLASSROOM: 325	ACCESS DOORS: 2+1	AIR CONDITION: Yes
BANQUET: 400	DISABLED ACCESS: Yes	VEHICULAR ACCESS: Yes
RECEPTION: 900	FLOOR: Wall to wall carpet	PARTITION WALLS: No
	STAGE: Fixed	
	PROJECTION SCREEN: Built in, automatically removed	
	SIMULTANEOUS INTERPRETATION SYSTEM: Large size, Wireless Infrared system for 2+1 languages. Translation booths according to E.U. standards	

- Legend**
- TELEPHONE SOCKET
 - POWER PLUG
 - 3 PHASE POWER PLUG
 - DIMMER LIGHT SWITCH

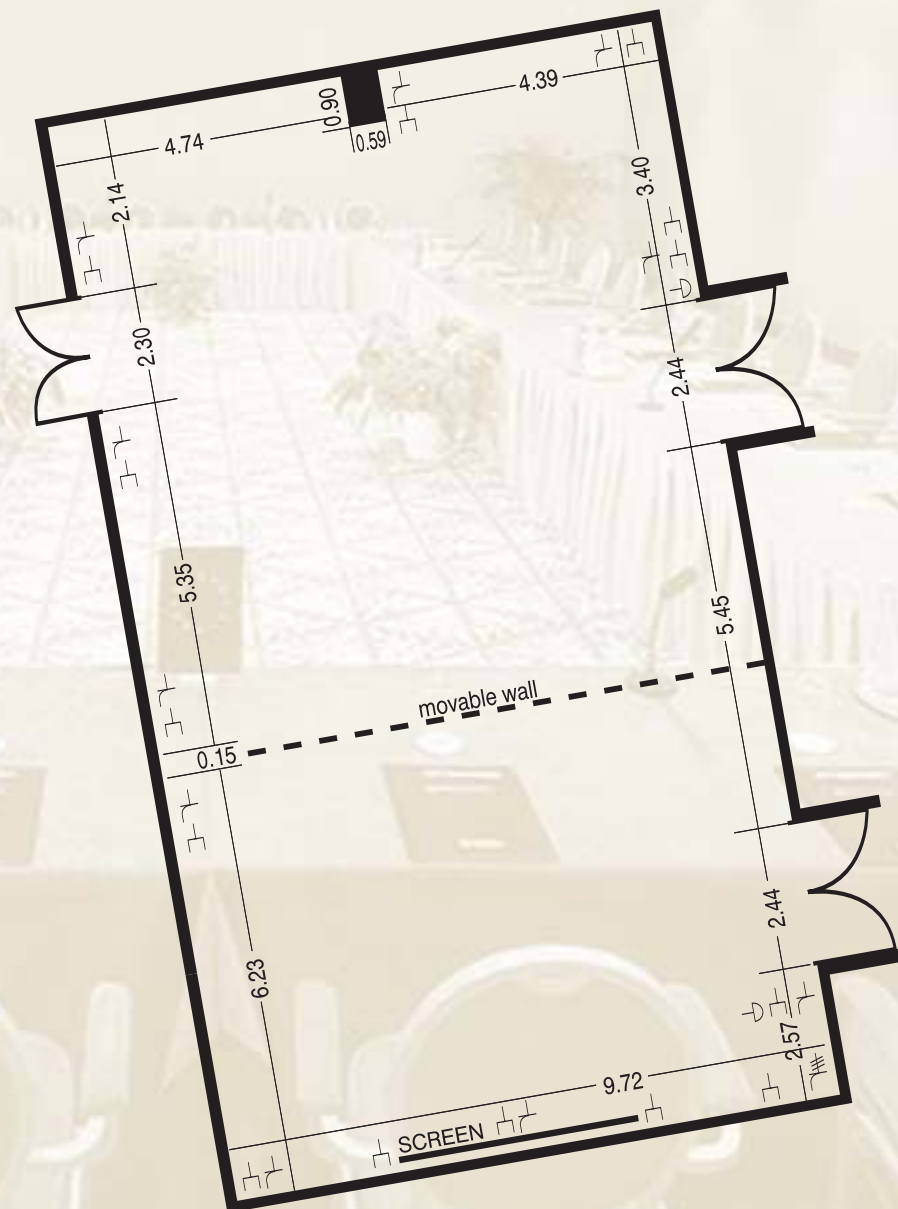
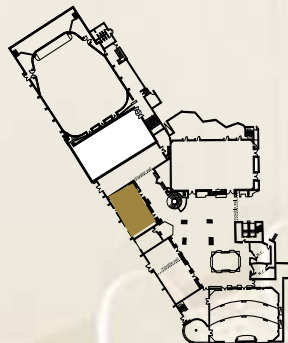
Nafsica hall




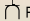

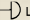
- Legend**
- ⊥ TELEPHONE SOCKET
 - ⊥ POWER PLUG
 - ⊥ 3 PHASE POWER PLUG
 - ⊥ DIMMER LIGHT SWITCH

Maximum Capacity	Technical Specifications	
STYLE	DIMENSIONS: 21.51 x 10.22	AREA: 220m ²
THEATRE: 320	CEILING HEIGHT: 3.50m	LEVEL: Ground
CLASSROOM: 250	ACCESS DOORS: 2	AIR CONDITION: Yes
BANQUET:	DISABLED ACCESS: Yes	VEHICULAR ACCESS: Yes
RECEPTION:	FLOOR: Wall to wall carpet	PARTITION WALLS: Yes
	PROJECTION SCREEN: Large size, built in, automatically removed	

Nefeli hall

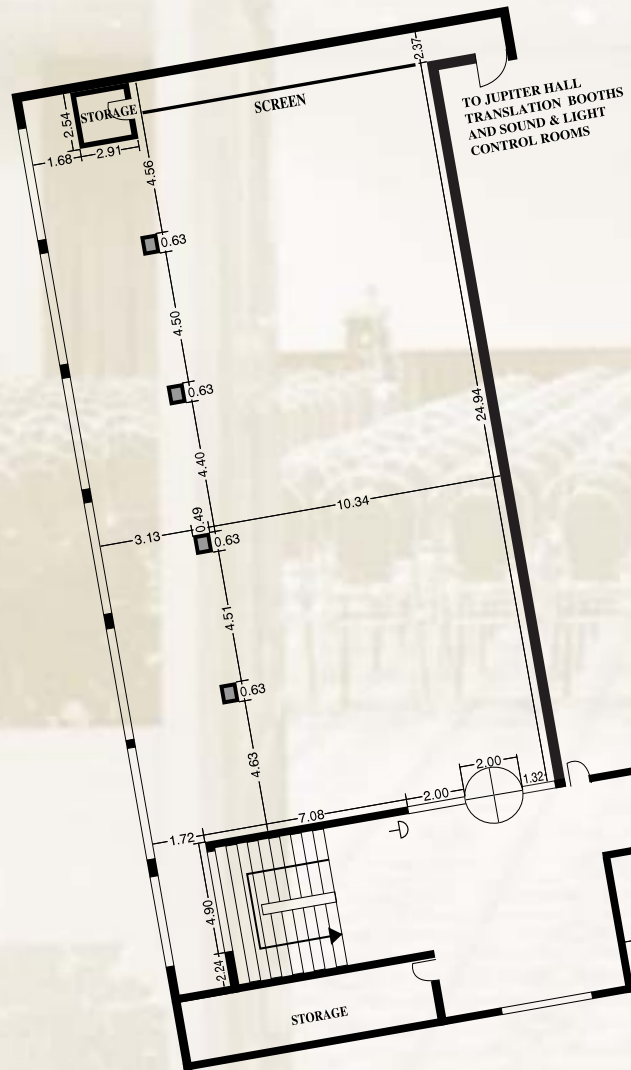
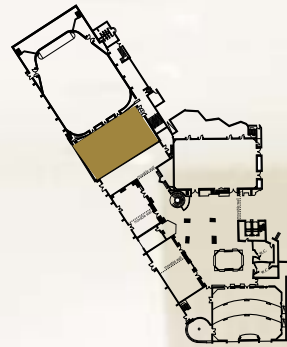


Legend

-  TELEPHONE SOCKET
-  POWER PLUG
-  3 PHASE POWER PLUG
-  DIMMER LIGHT SWITCH





Maximum Capacity	Technical Specifications	
STYLE	DIMENSIONS: 16.17 x 9.72	AREA: 155m ²
THEATRE: 220	CEILING HEIGHT: 3.50m	LEVEL: Ground
CLASSROOM: 150	ACCESS DOORS: 2	AIR CONDITION: Yes
BANQUET:	DISABLED ACCESS: Yes	VEHICULAR ACCESS: Yes
RECEPTION:	FLOOR: Wall to wall carpet	PARTITION WALLS: Yes
	PROJECTION SCREEN: Large size, built in, automatically removed	

Athena hall

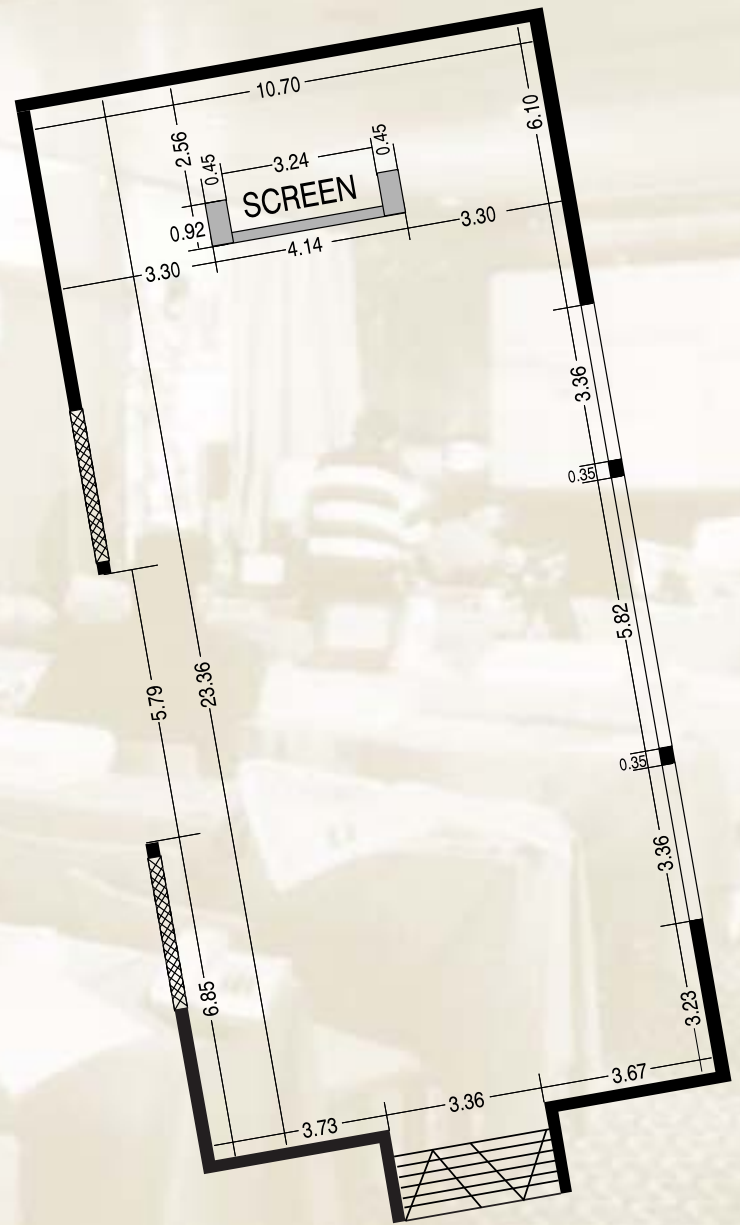


Maximum Capacity	Technical Specifications	
STYLE	DIMENSIONS: 24.94 x 13.45	AREA: 345m ²
THEATRE: 350	CEILING HEIGHT: 3.60m	LEVEL: 1st floor
CLASSROOM: 220	ACCESS DOORS: 1	AIR CONDITION: Yes
BANQUET:	DISABLED ACCESS: No	VEHICULAR ACCESS: No
RECEPTION:	FLOOR: Wall to wall carpet	PARTITION WALLS: No
	PROJECTION SCREEN: Large, ceiling mounted	

Legend

-  TELEPHONE SOCKET
-  POWER PLUG
-  3 PHASE POWER PLUG
-  DIMMER LIGHT SWITCH

Apollo room





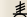
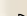
Legend

- ☐ TELEPHONE SOCKET
- ☐ POWER PLUG
- ☐ 3 PHASE POWER PLUG
- ☐ DIMMER LIGHT SWITCH

Maximum Capacity	Technical Specifications	
STYLE	DIMENSIONS: 23.36 x 10.70	AREA: 250m ²
THEATRE: 320	CEILING HEIGHT: 3.50m	LEVEL: Ground
CLASSROOM:	DISABLED ACCESS: Yes	AIR CONDITION: Yes
BANQUET:	FLOOR: Wall to wall carpet	VEHICULAR ACCESS: No
RECEPTION: 250	PROJECTION SCREEN: Large size, permanent	PARTITION WALLS: No

Executive Meeting Rooms

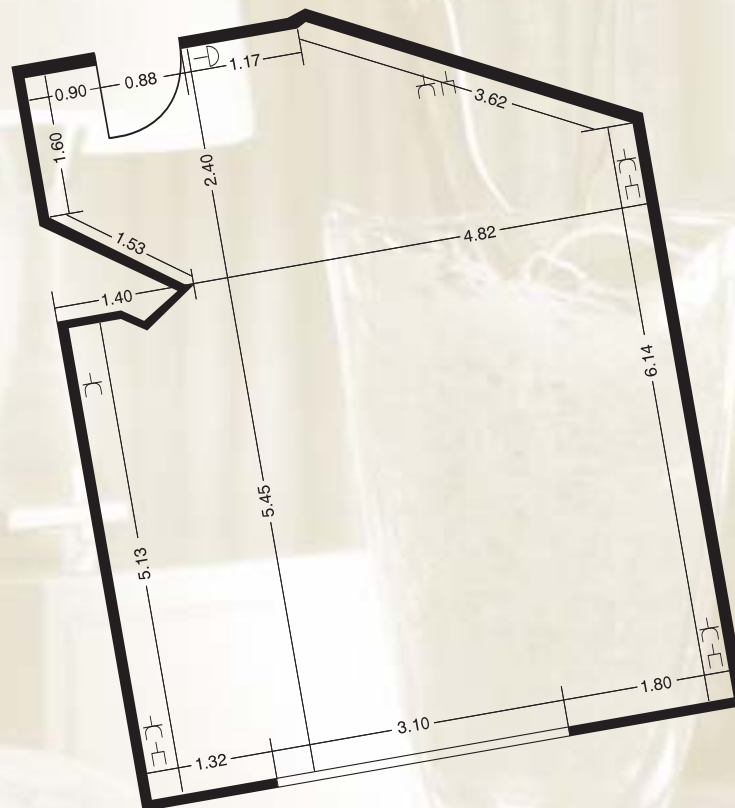
Legend

-  TELEPHONE SOCKET
-  POWER PLUG
-  3 PHASE POWER PLUG
-  DIMMER LIGHT SWITCH

Maximum Capacity	Technical Specifications	
STYLE	AREA: 60m ²	LEVEL: Ground
THEATRE: 60	CEILING HEIGHT: 2.65m	AIR CONDITION: 1st Floor
CLASSROOM: 40	DISABLED ACCESS: Yes	VEHICULAR ACCESS: Yes
	FLOOR: Wall to wall carpet	PARTITION WALLS: No



VIP lounge



Legend

- TELEPHONE SOCKET
- POWER PLUG
- 3 PHASE POWER PLUG
- DIMMER LIGHT SWITCH

Dome indoor pool

